

# TIRE INFORMATION SERVICE BULLETIN

## VEHICLES EQUIPPED WITH C-TYPE COMMERCIAL TIRES

There has been an increase in the variety of vehicles sold in the North American market that are based on platforms used around the world by vehicle manufacturers. These vehicles are commonly used in commercial service and come in various sizes and configurations with efficiency and cargo flexibility in mind.

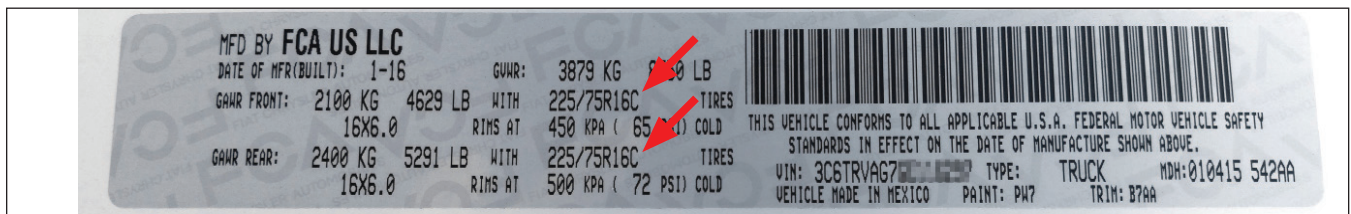
This TISB is a reminder about proper tire replacement guidelines, particularly as it applies to globalized vehicles and the differences in tire size designations that may be applied to them.

### NOTE

Before replacing tires, always refer to and follow the vehicle manufacturer’s tire replacement recommendations and restrictions.

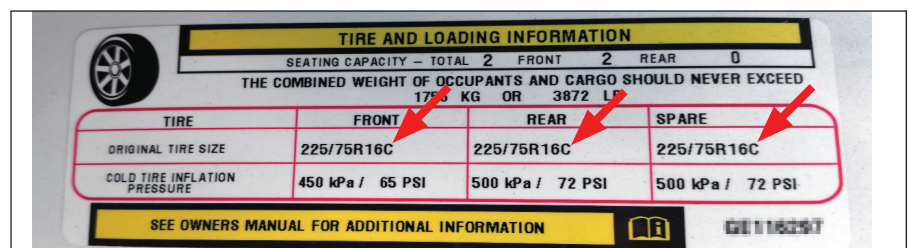
When considering tire replacement for globalized vehicles, carefully determine the minimum requirements for tire size designation, load carrying capacity, speed rating and load index for the original equipment tires and the recommended replacement tires as specified on the vehicle tire placard, certification label, the vehicle owner’s manual, or the vehicle manufacturer. Depending on the vehicle and its configuration, it may be equipped with P-Metric, LT-Metric, European Metric (Passenger), or European Metric C-Type tires.

Figures 1 and 2 are examples of placards from one of these vehicles. These placards show that European Metric C-Type tires are specified (note the “C” suffix in the tire size designation).



**FIGURE 1 (Above): Example Vehicle Certification Label**

**FIGURE 2 (Right): Example Vehicle Tire Placard**

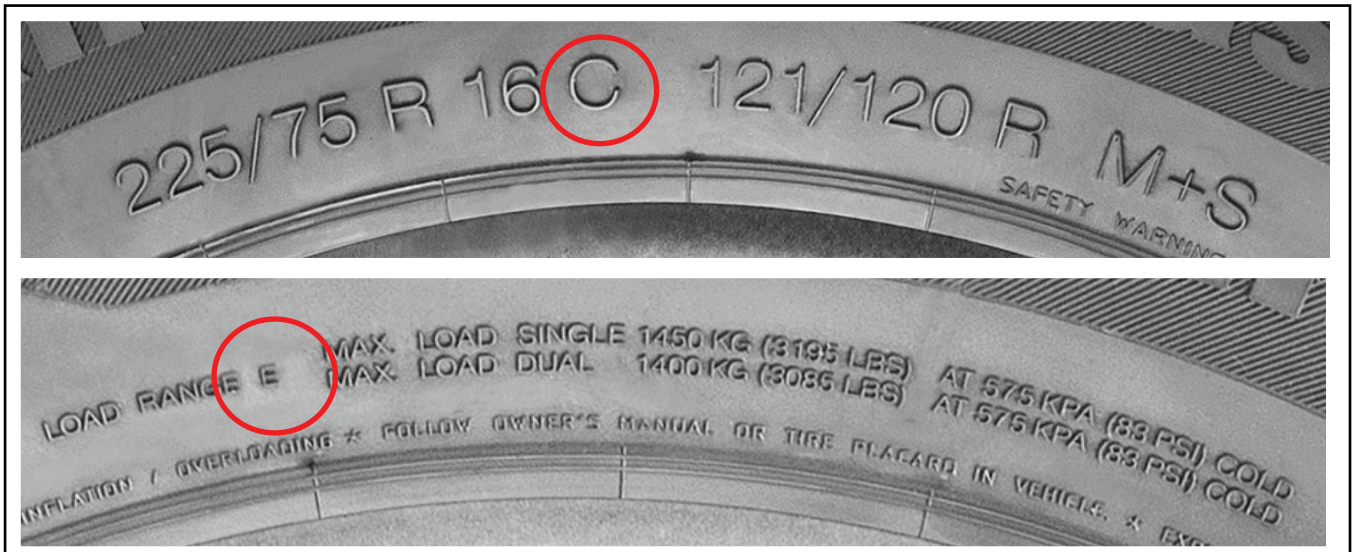


Tires with different size designations may not be interchangeable even if they have similar dimensions. For example, an LT-metric tire may not be a suitable replacement for a European Metric C-Type tire, even if the tires have similar section width, aspect ratio, and rim codes. Such tires typically have significantly different load carrying capacities. In other words: An LT225/75R16 is not the same as a 225/75R16C.

Tire Type	Tire Size Designation	Load Index and Speed Symbol	Load Identification	Maximum Load Capacity at Rated Pressure	
P-Metric (Passenger)	P225/75R16	104T	Standard Load	900 kg	240 kPa
European Metric (Passenger)	225/75R16	104T	Standard Load	900 kg	250 kPa
LT-Metric (Light Truck)	LT225/75R16	115/112R	Load Range E	1215/1120 kg	550 kPa
European Metric C-Type	225/75R16C	121/120R	Load Range E	1450/1400 kg	575 kPa

### NOTE

The “C” suffix in the tire size designation identifies the tire as a European Metric C-Type tire in Figure 3 below. The “C” is not a load range. The load range is marked separately on the tire sidewall.



**FIGURE 3: Sidewall markings example of a European Metric C-Type Tire**

*This Bulletin Replaces Volume 49, Number 2*

This is a publication of the U.S. Tire Manufacturers Association.  
 Duplication and distribution of this work in the original form is permitted. All other rights reserved.  
 To receive USTMA publications call +1 202.682.4800 or go to [USTires.org](http://USTires.org) and click on Publications.